

Surge Generator Motor Test Sets

SGM Series



Testing Applications

- Perform offline testing of new or in-service rotating machines or coils
- Designed to test the winding to winding and rotating machine which prevents failures and unexpected down time
- An advanced, powerful, portable line of surge generators for testing of small or high power motors

Safety and Design Features

- Emergency Stop switch
- Laptop controller included
- Integrated cable storage
- Wheeled-transport case
- Optional battery-operated Bluetooth printer

- **Powerful features** in an **easy to use** package
- **Lightweight** and **ruggedly constructed** for years of field or shop use



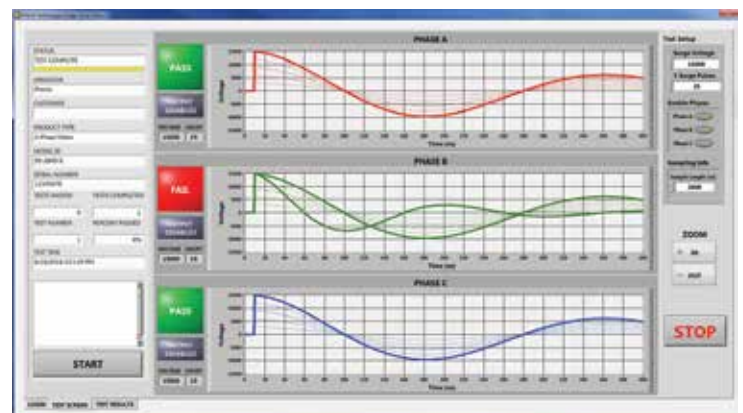
PHENIX Surge Generator Motor Test Sets are designed for motor repair facilities, motor, and coil manufacturers. The SGM Series are lightweight and packed in a rugged, wheeled transport case that is useable under the harshest conditions.

These instruments are equipped with sophisticated software which can be installed on an industrial PC or a laptop for field use. The software package is loaded with many useful features, such as a motor database, automated 3-phase testing, and automated analysis which can automatically determine pass/fail parameters.

All data is displayed on the screen and report generation in Excel* makes creating professional test reports easy and intuitive. The built-in data base function saves all results for future comparison and analysis.

The generous energy rating allows testing of even low inductance high power test objects. High voltage designs up to 75 kV are available upon request.

* Excel is registered trade mark of Microsoft.



MODEL	SGM12-7.2	SGM15-11
Voltage Uncertainty	±5%	±5%
Surge Energy	7.9 J	12.4 J
Capacitor Size	110 nF	110 nF
Max Output Voltage	12 kV	15 kV
Min Output Voltage	0.3 kV	0.3 kV
Discharge Frequency	6 Hz	5 Hz
3 Phase Output	Yes	Yes
Surge Current	1600 A	1600 A
Input Voltage	100-240 V	100-240 V
Frequency	45-65 Hz	45-65 Hz



Dimensions	22" L x 26" W x 14.75" H (560 mm L x 660 mm W x 375 mm H)
Weight	50 lbs (22.6 kgs)
Enclosure Rating	Nema 4 (IP56)

CABLES AND ACCESSORIES

Output Cables	4 x Output Cables, 33' (10 m), with battery clamps**
Input Power Cable	6' (1.8 m)
Power Interconnect Cable	6' (1.8 m)
USB Cable	6' (1.8 m)
Ground Cables	2 x 33' (10 m) with alligator clips

** Additional cable ends are available as an option

Defect Detection

- ✓ Low Turn-to-Turn Isolation
- ✓ Low Phase-to-Phase Isolation
- ✓ Low Insulation Coil-to-Coil
- ✓ Open Winding
- ✓ Bad Breakout Leads



PHENIX
TECHNOLOGIES

WORLD HEADQUARTERS

Phenix Technologies, Inc.
75 Speicher Drive
Accident, MD 21520 USA
Ph: +1.301.746.8118
Fx: +1.301.895.5570
Info@phenixtech.com

BRANCH OFFICES

Phenix Systems AG
Riehenstrasse 62A, 4058 Basel, Switzerland
Ph: +41.61.383.2770, Info@phenixsystems.com

Phenix Asia
Zhong Cheng Rd, Sec 1, No 177, 2F, Taipei 11148 Taiwan
Ph: +886.2.2835.9738, Fx: +886.2.2835.9879, Info@phenixasia.com

Environmental/Operating Conditions

- 32-113°F (0-45°C), indoor/outdoor in fair weather
- Humidity <95% non-condensing
- Low pollution level
- Altitude <3300 ft (1000 m)
- Storage 5°-131°F (-15-55°C)

ISO
9001:2008
Compliant

